

PART NW 1/4 SEC. 23, T5N, R2W, S.L.B. & M. BURMONT PARK SUBDIVISION

UNIT NO. 2

LOTS 81 TO 95

ROY CITY

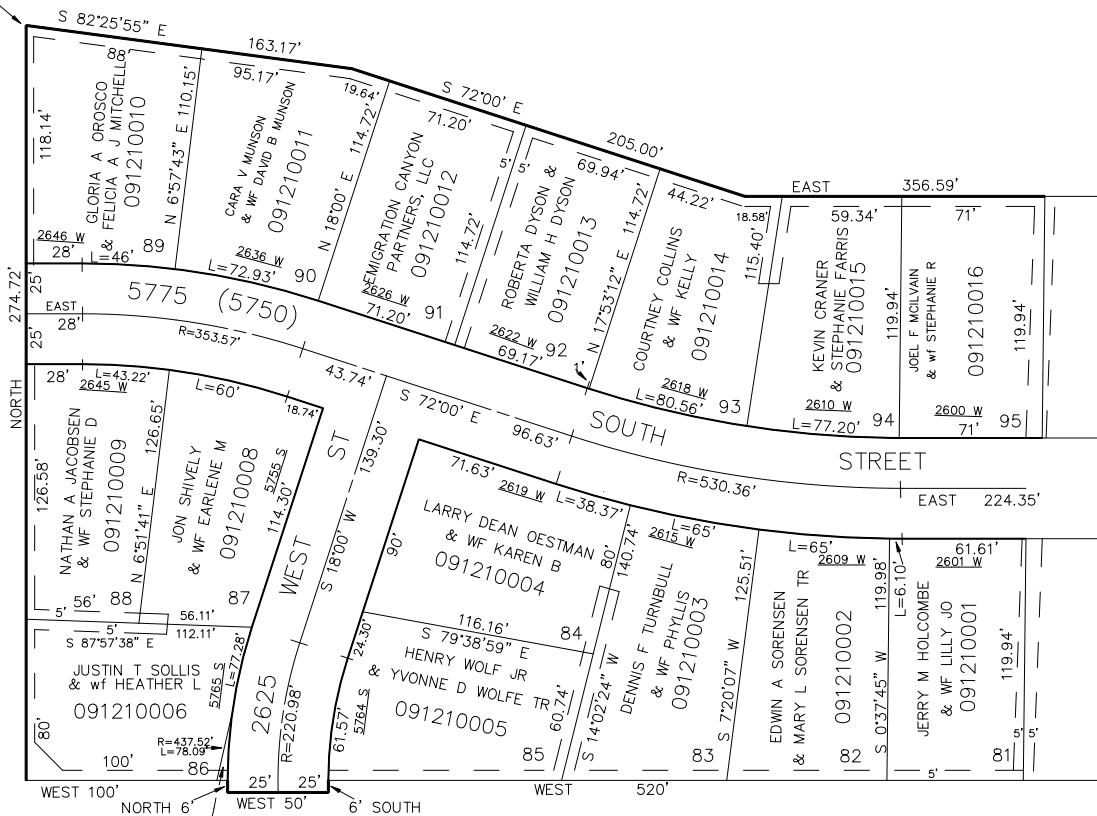
SCALE 1" TO 50'

TAXING UNIT: 41

SEE PAGE 119

POINT OF BEGINNING
SOUTH 945.28' AND
EAST 300' FROM NW
COR OF SEC 23

SEE PAGE 122



SEE PAGE 120

ROY CITY
091210007

SEE PAGE 125

FOR COMPLETE ENG. DATA
SEE ORIGINAL DED. PLAT
IN BOOK 12 PAGE 34 OF RECORDS.

5' UTILITY & DRAINAGE EASEMENTS
EACH SIDE OF PROPERTY LINES AS
INDICATED BY DASHED LINES
EXCEPT AS OTHERWISE SHOWN.